



GAT MONTHLY MEMBERSHIP PROGRESS REPORT

Results as of: 2/28/2022

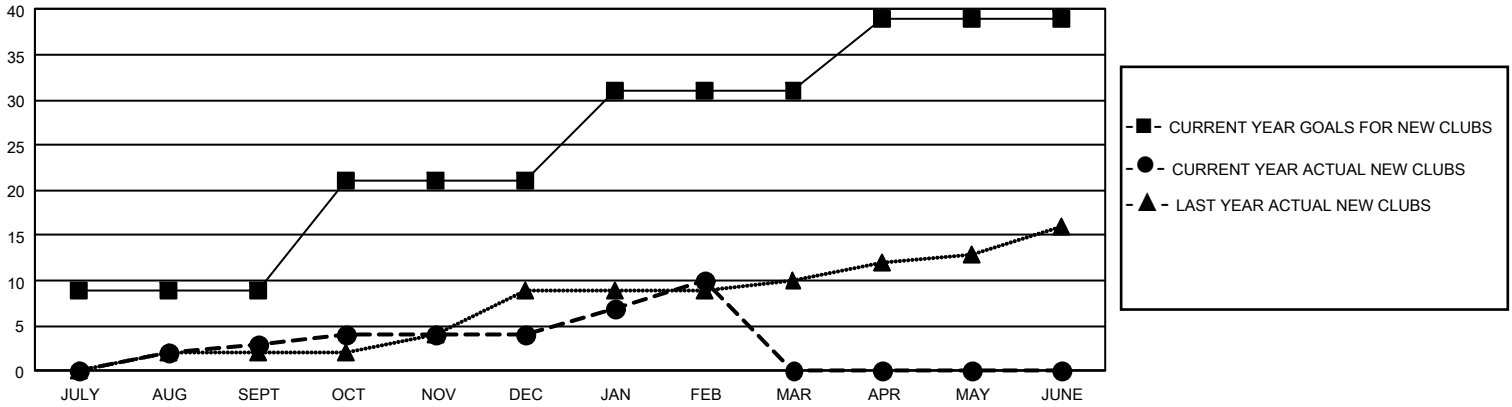
GMT Constitutional Area 1, Group M

REPORT DOES NOT INCLUDE CLUBS IN UNDISTRICTED AREAS.

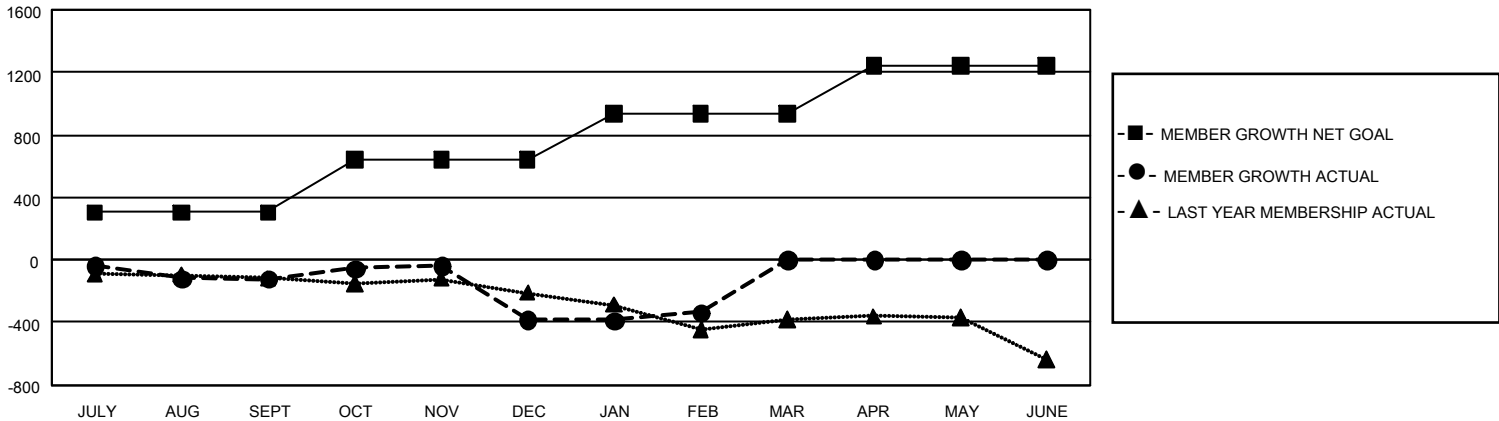
Clubs			
RESULTS FOR 2021-2022			
QUARTER	NEW CLUB GOAL	NEW CLUBS	DROPPED CLUBS
JULY/AUG/SEPT	27	3	11
OCT/NOV/DEC	36	1	12
JAN/FEB/MAR	30	6	1
APR/MAY/JUNE	24	0	0

Members			
RESULTS FOR 2021-2022			
QUARTER	MEMBER GROWTH NET GOAL	MEMBER GROWTH ACTUAL	DROPPED MEMBERS ACTUAL (including transfers)
JULY/AUG/SEPT	306	673	704
OCT/NOV/DEC	335	621	776
JAN/FEB/MAR	292	528	407
APR/MAY/JUNE	307	0	0

GOALS AND ACTUAL NEW CLUBS CUMULATIVE



GOALS AND ACTUAL MEMBERS CUMULATIVE



DROPPED CLUBS: 24	396 CLUBS OF 816 ADDED 1 OR MORE NEW MEMBERS	<u>GENDER DISTRIBUTION</u>	
<u>DROPPED MEMBERS</u>		MALE	10,658 (61.94%)
DECEASED	254	FEMALE	6,550 (38.06%)
CLUB CANCELLED	294	NON BINARY	0 (0.00%)
OTHER	1,339	PREFER NOT TO ANSWER	0 (0.00%)
TOTAL	1,887	TOTAL FAMILY UNIT MEMBERS	3,659
	CLICK HERE FOR CUMULATIVE MEMBERSHIP DATA	FAMILY MEMBERS PAYING HALF DUES	1,878